


# BAY 1

# NDD-WED.

# UPL147

|  |              |   |
|--|--------------|---|
| <b>SHP RETURN ADVICE NOTE</b><br>(QUALITY ISSUES ONLY) | DATE:        | <br>SIGNAL HILL PRODUCTS |
|  | 14 July 2015 |   |

| CUSTOMER DETAIL                    |                                       |                                |
|------------------------------------|---------------------------------------|--------------------------------|
| ACCOUNT NUMBER (C-CODE):<br>C13147 | OUTLET NAME:<br>Westmead Cash & Carry | TICKET CASE NUMBER:<br>F000050 |

| PRODUCT DETAILS  |                                   |           |              |              |             |             |                           |
|--|-----------------------------------|-----------|--------------|--------------|-------------|-------------|---------------------------|
| PRODUCT CODE   | PRODUCT DESCRIPTION               | PACK SIZE | CASES / KEGS | BATCH NUMBER | EXPIRY DATE | REASON CODE | DECANT/ RETURN TO AIRPORT |
| FGCD056  | Strongbow DRY<br>500ml x 24 Cases | 500ml     | 38           | E1332        | 05/10/2025  | 601         | Return                    |
| [A large diagonal line is drawn across the remaining rows of the table, indicating that only the first row is approved for collection and credit.] |                                   |           |              |              |             |             |                           |

**ONLY THE ABOVE APPROVED QUANTITIES & BATCHES WILL BE COLLECTED & CREDITED.**

| RETURN REASON CODES |              |  |
|---------------------|--------------|--|
| CODE                | DESCRIPTION  | DETAIL   |
| 601                 | Extrinsic    | QUALITY - Product where the external packaging (i.e. label, capsule, carton, etc.) is incorrect or damaged.              |
| 602                 | Intrinsic    | QUALITY - Product where the content is incorrect, i.e. foreign object, taste, smell, colour, etc.                        |
| 603                 | Stock Recall | QUALITY - Any product to be withdrawal from trade under instruction from SHP Quality Management and Research department. |

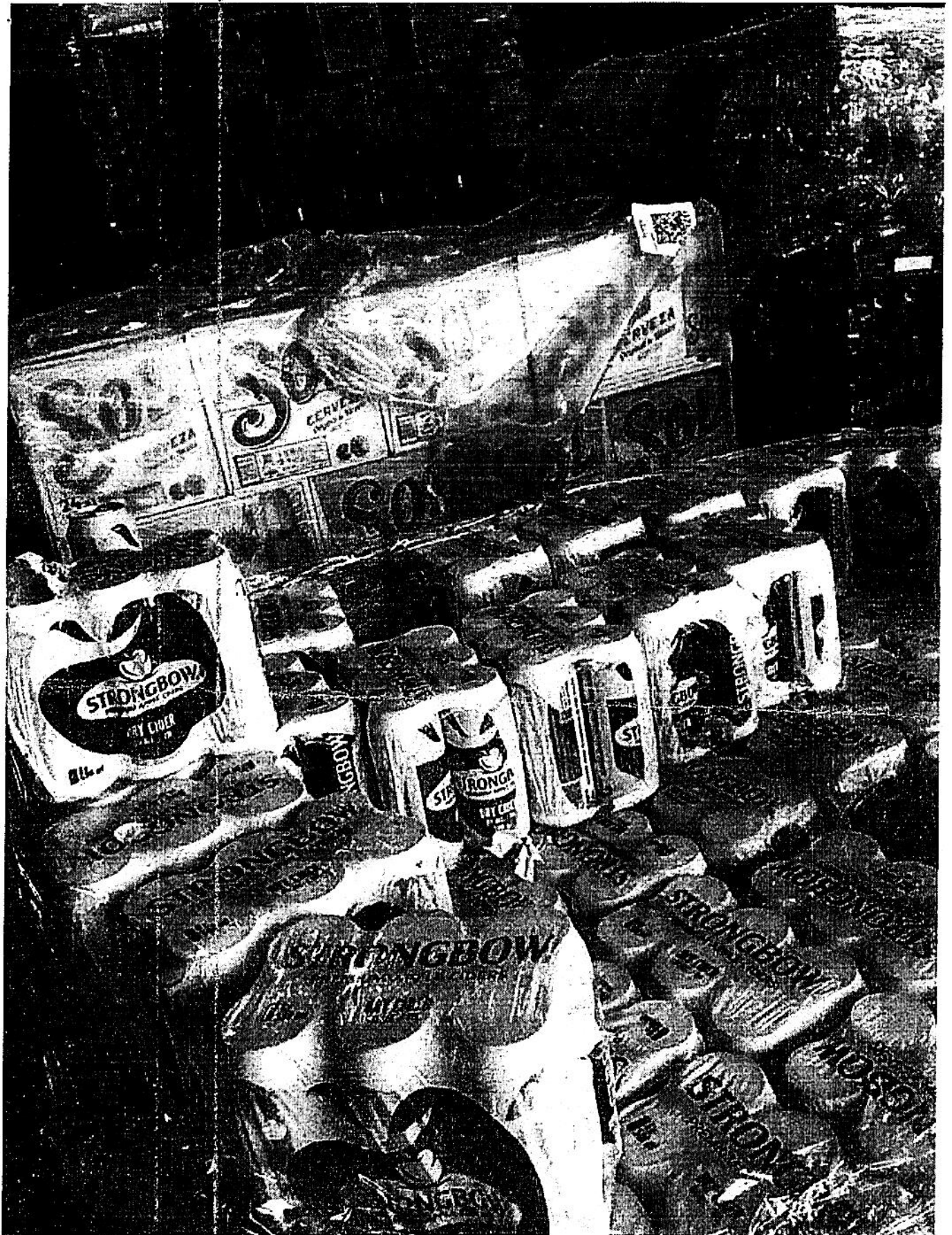
|   |
|---|
| <b>RETURN REASON DESCRIPTION</b><br>Leaking cans of Strongbow DRY 500ml |
|---|

| AGREED UPLIFTMENT QUANTITIES & BATCHES (PRIOR TO UPLIFTMENT) |                |
|--|----------------|
| COMPLETED BY: Elsworth Nene                                  | SHP QA MANAGER |
| NAME: Elsworth Nene  | NAME:          |
| SIGNATURE: emnene  | SIGNATURE:     |

**NOTE:** PLEASE NOTE THAT THIS IS NOT A CREDIT NOTE, but serves to inform the company that its sales representative recommends that a credit note be passed for the reason specified above. Should the Regional Sales Manager in his/her sole discretion accept this recommendation, a credit note will be passed in favour of the Customer. No refunds or product replacements will be given.

B





---

**Westmead Cash & Carry - Strongbow Dry 500ml RAN**

---

From Mfana Nene <mfana.nene@signalhillproducts.com>

Date Wed 2025-07-16 06:43

To Signal Hill Products Customer Interaction Centre <customercare@signalhillproducts.com>

 3 attachments (4 MB)

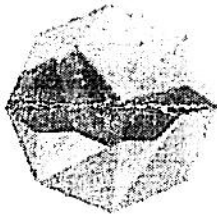
SHP - Returns Advice Note v1 New Westmead CC.pdf; IMG\_1994 WCC.jpg; IMG\_1993 WCC.jpg;

Hi

Please see attached RAN from Westmead CC for Strongbow Dry Leaking cans.

Kind Regards

**Mfana Nene**  
Team Leader - Sales  
+27 81 885 8932



# SIGNAL HILL PRODUCTS

**STRONGBOW.**

